

PALLET BOX (36p) EVO

THE ISSUE

In the transport sector, a well known problem is the gain in payload to allow several reductions, whether in terms of money, fuel savings but also in terms of reducing CO2 emissions.

THE CHEREAU SOLUTION

The solution for CHEREAU is its INOGAM EVO range, the aim of which is to rethink the layout of semi-trailers. This involves lightening the chassis but also rethinking the accessories used in the daily life of users for work that respects people and the environment.

Front view with closed trunk



Front view with open trunk



Interior view with pallets



TECHNICAL DATA

● Unladen weight +/- 345 Kg

● Weight saving of 30 Kg

● Payload 900 Kg

● Smooth steel bottom Magnelis

- Addition of 3% magnesium

- Anticorrosion 3x higher than galvanised steel

● Doors

- Galvanised steel sheet
- Opening from the top assisted by 2 compasses
- Padlock locking

● Packing Kit

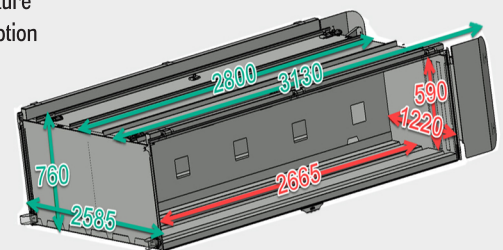
- Screwed assembly
- Assembly: 2h



● Finishes

- Galvanised steel structure
- Painted doors as an option
- Built-in bicycle guard

● Dimensions



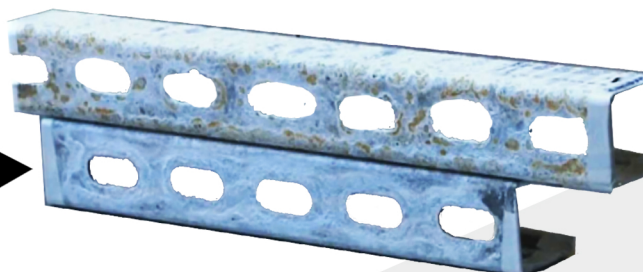
MAGNELIS STEEL

Magnelis steel has self-healing properties that prevent the appearance of red rust over time.

Zinc coating



Magnelis coating



**AFTER
5803
HOURS OF USE**